

Recessed luminaire - Opal diffuser - direct distribution

Suitable for ceilings with visible T-bars; flat aluminium frame, powered white; steel plate housing; Housing colour traffic white RAL 9016; LED backlight technology; direct light distribution using opal PMMA diffuser and single lenses. Including a multi-lumen driver with 4 settable light outputs; Flicker < 5%; Flexible 40cm long connecting cable wired to the luminaire via a plug system ready for operation. Protection rating: IP20/IP40 (room) Accessories: please order the installation frame 60110003100 for installation in cut-out ceilings, the frame 60110005100 for ceiling surface-mounting and feed-through wiring box DV-BOX ET for convenient connection to the control gear separately. Further operating data can be found in the operating instructions.

## CHARACTERISTICS

Order number	60114034110
EAN number	4020863422289
Commodity code	94051190
Certification mark	IP 40/20, Protection class II, F, Indoor, CE
Impact resistance (IK rating)	IK02 (-10°C bis 35°C)
Ambient temperatur	ta -10°C to 35°C
Warranty period	5 years
State funding programs	BEG - Federal funding for efficient buildings (valid only for Germany)

## ELECTRICAL ENGINEERING

Controller	Electronic multi-lumen driver, 4-steps (1 pcs.)
System output	39W-30W
Mains voltage	230V/50Hz
Energy efficiency class/light source	C

## LIGHTING TECHNOLOGY

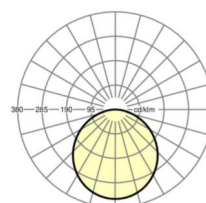
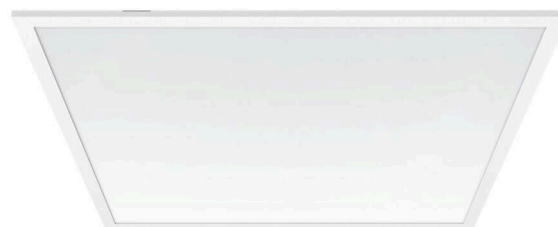
Placement	LED, Colour rendering/Light colour CRI $\geq 80$ / 4000K
Colour tolerance (MacAdam)	3SDCM
Nominal luminous flux/switching steps (EDM)	5100lm/39W, 4700lm/36W, 4500lm/34W, 4100lm/30W (Standard setting 4400lm)
LED service life	50000h L80/B10 (Tq 35°C/do not cover with insulation wool)
Luminaire luminous efficiency	135lm/W-130lm/W
UGR lat./long.	22.1 / 22.1 (39W)

## MECHANICS

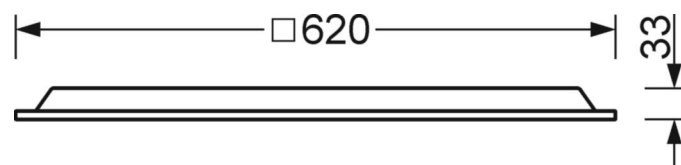
Housing colour	traffic white RAL 9016
Dimensions (LxWxH/DxH)	620mm x 620mm x 33mm
Depth	33mm
Ceiling system	Ceilings with visible T-rails [s-TS] (625x625 mm), cut-out ceilings [AD]
Ceiling cut-out (LxW/D)	648mm x 648mm (when using accessory mounting frame)
Installation depth	145mm [AD]; 145mm [s-TS]; 115mm [s-TS] min
Weight (net)	2.05kg
Type of installation	Recessed mounting, Ceiling installation individual mounting, Ceiling-mounted single installation

## DEEP-LINK

<https://www.regiolum.de/en/article/60114034110>



Reference	LED 5100lm/39W 840
$\eta_{LB}$	100 %
$\Phi_{\downarrow/\uparrow}$	100 % / 0 %
UGR lat./long.	22.1 / 22.1



## Dimensions

<b>L</b>	620 mm	Length
<b>B</b>	620 mm	Width
<b>H</b>	33 mm	Height
<b>T</b>	33 mm	Depth
<b>DA(L)</b>	648 mm	Cutting dimension length
<b>DA(B)</b>	648 mm	Cutting dimension width
<b>Et(min)</b>	115 mm	Ceiling distance minimum - minimum dimension (visible T-rail)
<b>Et(AD)</b>	145 mm	Ceiling distance minimum (cut-out ceiling)
<b>Et(TS)</b>	145 mm	Ceiling distance minimum - recommended (visible T-rail)
<b>MLTS1</b>	625 mm	Module dimension length (visible T-rail)
<b>MLTS_1/2</b>	625	Module dimension length (visible T-rail) 1/2
<b>MBTS1</b>	625 mm	Module dimension width (visible T-rail)
<b>MBTS_1/2</b>	625	Module dimension width (visible T-rail) 1/2
<b>KL</b>	144 mm	Length luminaire head or box for ballasts
<b>KB</b>	42 mm	Width luminaire head or box for ballasts
<b>KH</b>	29 mm	Height luminaire head or box for ballasts

